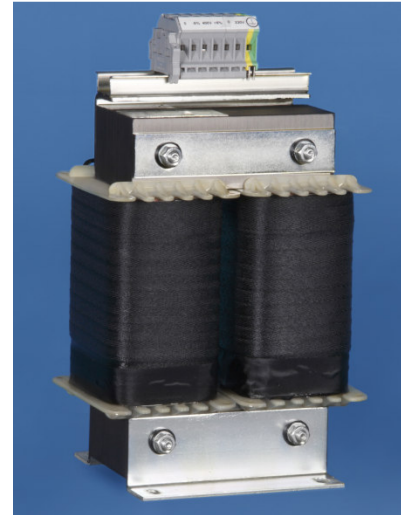
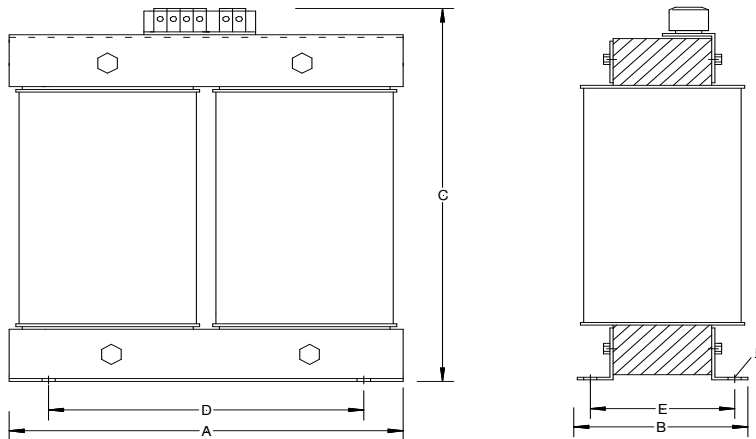


6. Transformers for medically used premises

6.1 Type MTRU 2 - 10 KVA Single - phase

Corresponding to VDE 0570 DIN EN 61558-2-15



Construction:

Open transformer separate windings. Type protection IP 00 suitable for installations up to IP 23.
Corrosion protection via complete impregnation. Max. ambient temperature 40° C
Insulation class T40E.

For medically used premises. Fixed with angle irons protective winding between primary and secondary.
Including centre tapping.

Type	Power KVA	Design Size Core	Copper weight kg	Total weight kg	Dimensioning					
					A mm	B mm	C mm	D mm	E mm	F mm
MTRU 2.0	2.0	UI 132	7.9	21.0	176	141	225	112	102	10
MTRU 2.5	2.5	UI 150	7.5	25.0	200	135	260	124	107	10
MTRU 3.0	3.0	UI 150	8.8	33.0	200	147	260	124	119	10
MTRU 4.0	4.0	UI 168	11.5	27.0	226	138	357	136	110	11
MTRU 5.0	5.0	UI 168	12.8	31.5	226	172	357	136	144	11
MTRU 6.3	6.3	UI 210	16.5	57.0	280	173	360	176	143	12
MTRU 8.0	8.0	UI 210	16.5	59.0	280	173	428	176	143	12
MTRU 10.0	10.0	UI 210	20.0	70.0	280	188	428	176	158	12