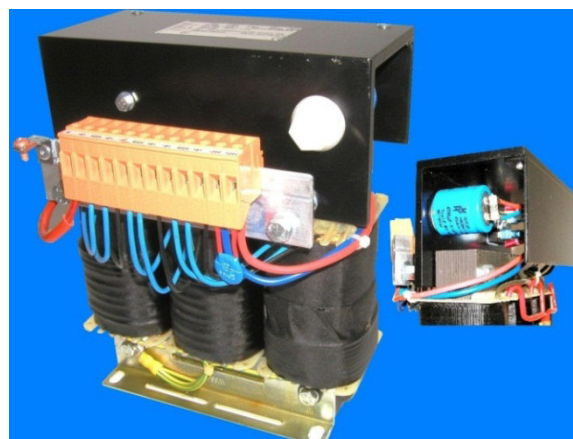
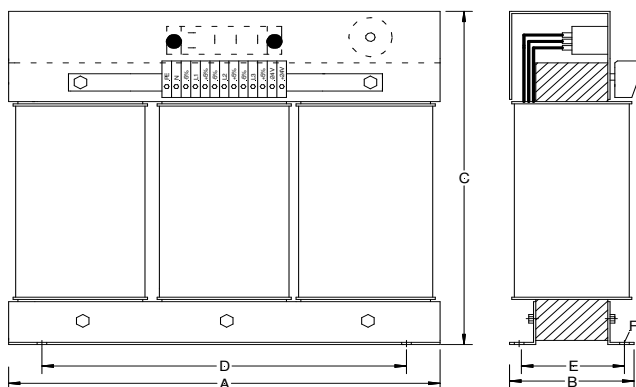


8. Three – phase power supply units

8.1 Type DBH 24 V/ 10 – 40 A smoothed

Corresponding to VDE 0570/ DIN EN 61558-2-6



Construction:

Three – phase power supply unit separate windings. Corrosion protection via complete impregnation. The smoothed compactly constructed three – phase power supply units of the model series DBH are characterised by high reliability and operating safety. Particularly small footprint!

Technical data:

Input voltage:	3 x 400 VAC 50/60 Hz
Output voltage:	24 VDC (other tensions on request)
Output current:	10 - 40 A (see table)
Ripple:	< 3 %
Cooling:	Convection fitting position in the direction of convection
Operating mode:	Continuous duty
Insulation class:	T40E
Ambient temperature:	Max. 40°C
Type protection:	IP 00 suitable for installations up to IP 23

Type	Power	Output current	Design size	Copper weight	Total Weight	Dimensioning					
						A	B	C	D	E	F
	W	A	Core	kg	kg	mm	mm	mm	mm	mm	mm
DBH 2410	36	10.0	125	1.35	5.7	150	104	224	106	76	6.8
DBH 2416	53	16.0	150	2.20	7.5	209	112	199	106	66	6.8
DBH 2420	72	20.0	150	3.00	10.4	209	132	199	106	86	6.8
DBH 2430	53	30.0	175	3.90	15.5	244	162	226	135	88	6.8
DBH 2440	72	40.0	175	4.90	14.7	244	162	226	135	88	6.8